

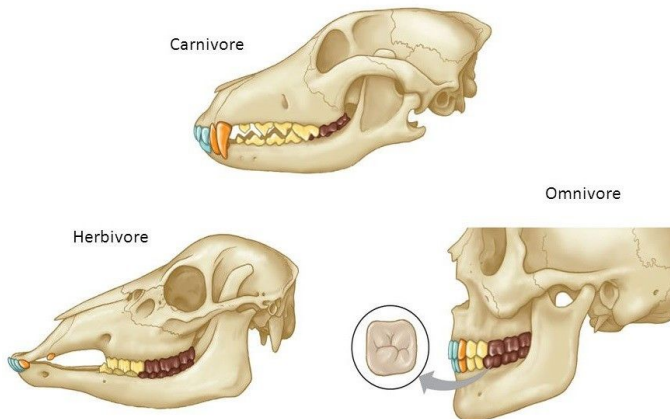
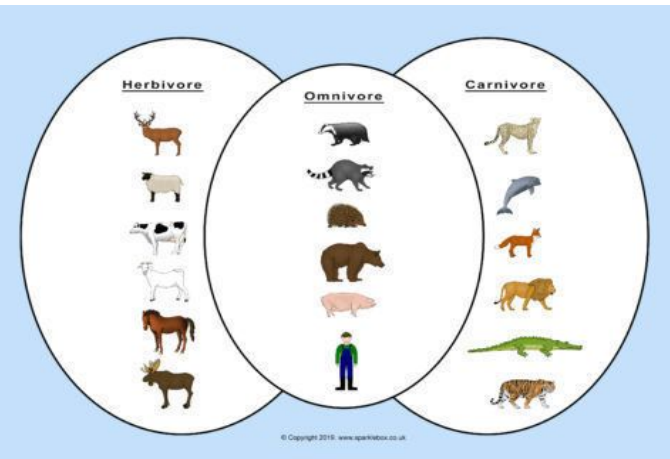
Animals

Significant Scientist

Temple Grandin

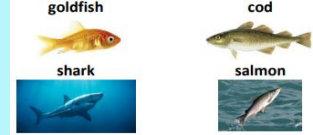


Temple Grandin is a scientist from America who studies how animals behave. She helps design safe spaces for animals and teaches people how senses and feelings affect how animals live. Her work shows how understanding animals can keep them safe and happy.



Key Knowledge

Fish



Reptiles



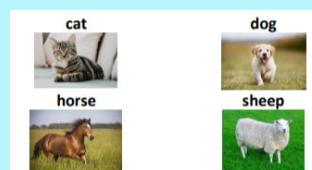
Birds



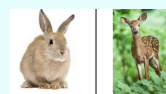
Amphibians



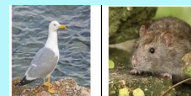
Mammals



Herbivore



Omnivore



Carnivore



Key Vocabulary

fish

Animals that live in the water, breathe with gills and mostly have fins and scales.

reptile

Cold blooded animals that lay eggs and mostly have scales on their skin.

bird

Warm blooded animal that lays eggs, has a body covered in feathers and has wings. They have a beak and no teeth.

amphibian

A cold-blooded animal that spends time on land and in the water.

mammal

A warm blooded animal with a backbone and skin usually covered with hair or fur. It feeds its young with milk produced by the mother.

herbivore

Animals that only eat plants.

omnivore

Animals that eat plants and other animals.

carnivore

Animals that eat the flesh of other animals.

Working Scientifically Skills

Use observations and ideas to suggest answers to questions.

Gather and record data to help in answering questions.

Enquiry Skills

Pattern seeking

Research

Sorting and classifying