

# Grange Park Primary School

## Job Role - Class Teacher

**Apply by:** 4pm Tuesday 14 May 2024

**Interviews:** Friday 17 May 2024

**Salary Scale:** MPS: Suitable for ECT candidate

**Hours:** Full time

**Contract Term:** Permanent

**Job Start:** September 2024

**Grange Park Primary School is looking for an enthusiastic, inspirational class teacher.** 'Creating foundations for bright futures' is our motto, where we foster a nurturing environment and every child is encouraged to find their own voice and grow as a person, while developing a lifelong love for learning. For us, a bright future is not just what children go on to achieve academically, but it's one where they have high aspirations for themselves, build strong relationships and are happy and confident to follow their own paths. Our school was inspected by Ofsted in March 2022 and it continues to be a 'good' school.

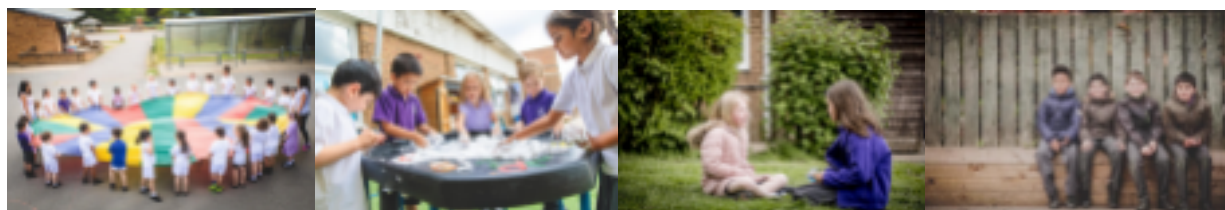
Our children are motivated to achieve, encouraged to be independent and a delight to teach. Our stimulating learning environment showcases children's love of learning. Our beautiful grounds, overlooking the heart of Winchmore Hill, which include allotments, fire pit, school pond and playing fields enable us to provide enriched outdoor learning experiences such as overnight camping and forest school. Children are happy and enjoy school, parents support the school and their children, and staff are friendly and hardworking. Our school is well resourced and every child in year 1- year 6 has their very own chromebook they can use at home and at school.

As part of the Connect Education Trust, we are strongly committed to providing high quality professional development and career progression for all staff. We are constantly reviewing our practices to ensure that our staff can focus on what matters, providing a rich environment in which children can learn and thrive. We are able to offer significant opportunities to work in collaboration with colleagues at Grange Park Primary School and across the Trust. At Grange Park Primary School staff are able to be involved with developments within the curriculum in areas that interest them. We encourage expertise and a staff that supports one another to develop their own practice by creating remarkable futures for all pupils.

The well-being of our staff is of paramount importance and we promote a healthy work-life balance. We provide staff with well-being days, and an attendance reward scheme, as well as giving all employees access to a support hub. Grange Park Primary School provides opportunities to ensure that we value hard work and dedication.

With easy access into central London, our school is ideal for candidates wanting to live in either inner or outer London. In line with recent legislation, applicants must have a command of spoken English that is sufficient to effectively carry out duties of the role.

Visits to the school are warmly welcome. Please contact the school office on 0208 360 1001 or email [grangepark.recruitment@connectededucationtrust.org](mailto:grangepark.recruitment@connectededucationtrust.org) to book a place on the tour or a phone call with the Headteacher.



Please visit our website to learn more about Grange Park: <https://www.grangeparkprimaryelt.org>.

For an application pack please email our Human Resources Team at [grangepark.recruitment@connectededucationtrust.org](mailto:grangepark.recruitment@connectededucationtrust.org)

*All Connect Education Trust is committed to safeguarding, therefore all employees working within the Trust must have the ability to work in a way that promotes the safety and wellbeing of our children and young people. All candidates are required to complete the school's 'Keeping Children Safe in Education' declaration and will be asked to apply for an Enhanced Check from the Disclosure and Barring Service (DBS). For posts in regulated activity, this will include a barred list check. The Trust also requires consent from applicants to carry out online searches of publicly available information, including social media, prior to interview.*

*We encourage applications from people from all backgrounds and aim to have a workforce that represents the wider society that we serve. We pride ourselves on being an employer of choice. We champion diversity, inclusion and well-being and aim to create a workplace where everyone feels valued and a sense of belonging.*